

# FRAME & BUMPERS

## TABLE OF CONTENTS

	page		page
<b>BUMPERS</b>		<b>INSTALLATION</b> .....	4
SPECIFICATIONS - TORQUE .....	1	<b>FRAME</b>	
<b>FRONT FASCIA</b>		SPECIFICATIONS	
REMOVAL .....	1	FRAME DIMENSIONS .....	4
INSTALLATION .....	1	SPECIFICATIONS - TORQUE .....	9
<b>FRONT BUMPER REINFORCEMENT</b>		<b>FRONT CRADLE CROSSMEMBER</b>	
REMOVAL .....	2	DESCRIPTION	
INSTALLATION .....	2	DESCRIPTION - FRONT CRADLE	
<b>REAR FASCIA</b>		CROSSMEMBER .....	9
REMOVAL .....	3	DESCRIPTION - FRONT CRADLE	
INSTALLATION .....	3	CROSSMEMBER THREAD REPAIR .....	9
<b>REAR BUMPER REINFORCEMENT</b>		REMOVAL .....	10
REMOVAL .....	3	INSTALLATION .....	12
INSTALLATION .....	3	<b>FRONT CROSSMEMBER MOUNT BUSHINGS</b>	
<b>REAR FASCIA - SCUFF PAD</b>		REMOVAL .....	12
REMOVAL .....	4	INSTALLATION .....	12

## BUMPERS

### SPECIFICATIONS - TORQUE

DESCRIPTION	N-m	Ft. Lbs.	In. Lbs.
Front bumper reinforcement attaching nut	54	40	—
Rear bumper reinforcement attaching nut	27	20	—

## FRONT FASCIA

### REMOVAL

- (1) Release hood latch and open hood.
- (2) Remove the headlamp assemblies (Refer to 8 - ELECTRICAL/LAMPS/LIGHTING - EXTERIOR/HEADLAMP - REMOVAL).
- (3) Hoist vehicle and support with safety stands.
- (4) Remove the five bolts attaching bottom of fascia/air dam to radiator closure panel.
- (5) Remove front wheels.
- (6) Remove front wheelhouse splash shields fasteners as necessary to gain access to bolts attaching front fascia to fender. (Refer to 23 - BODY/EXTERIOR/ WHEELHOUSE SPLASH SHIELD - REMOVAL).
- (7) Remove the two bolts and two nuts attaching fascia to the front fenders (Fig. 1).
- (8) Disconnect fog lamp wire connectors, if necessary.
- (9) Lower vehicle.

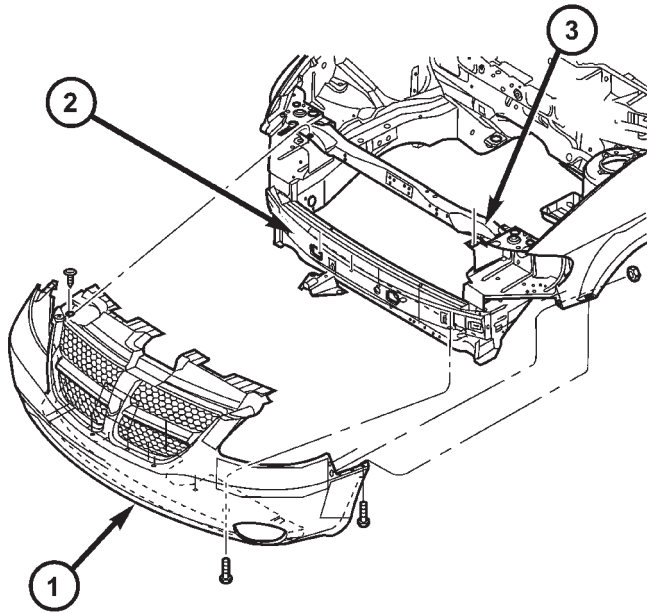
- (10) Remove two bolts attaching the upper grille support to the headlamp mounting panel at each side of the grille.

- (11) Remove bumper fascia from vehicle.

### INSTALLATION

- (1) Position front bumper fascia on vehicle.
- (2) Install the two bolts attaching fascia to headlamp mounting panel at each side of grille.
- (3) Hoist vehicle and support with safety stands.
- (4) Install the two bolts and two nuts attaching fascia to the front fenders (Fig. 1). The fascia should be flush to fender.
- (5) Install front wheelhouse splash shields fasteners. (Refer to 23 - BODY/EXTERIOR/ WHEELHOUSE SPLASH SHIELD - INSTALLATION).
- (6) Install front wheels.
- (7) Connect fog lamp wire connectors, if necessary.
- (8) Install the five bolts attaching bottom of fascia to radiator closure panel.
- (9) Lower the vehicle.

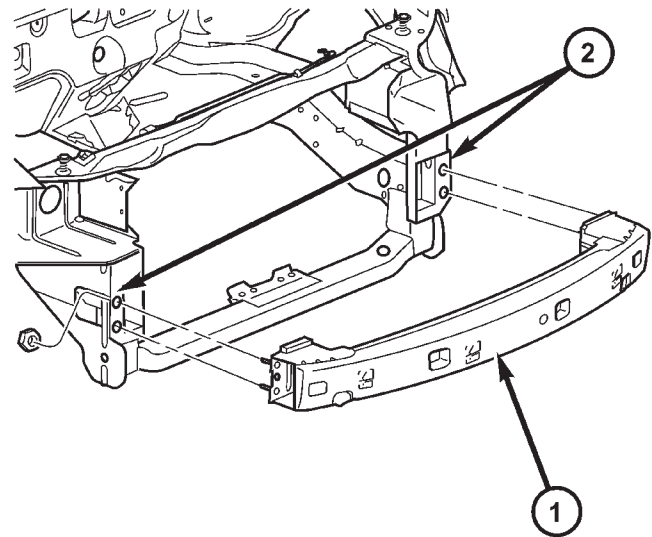
## FRONT FASCIA (Continued)



80a15863

**Fig. 1 FRONT BUMPER FASCIA**

- 1 - FRONT BUMPER FASCIA
- 2 - FRONT BUMPER REINFORCEMENT
- 3 - RADIATOR ENCLOSURE



80a159d4

**Fig. 2 FRT BUMPER REINFORCEMENT**

- 1 - FRONT BUMPER REINFORCEMENT
- 2 - FRAME RAILS

(10) Install the headlamp assemblies. (Refer to 8 - ELECTRICAL/LAMPS/LIGHTING - EXTERIOR/HEADLAMP - INSTALLATION).

## FRONT BUMPER REINFORCEMENT

### REMOVAL

- (1) Remove front bumper fascia. (Refer to 13 - FRAMES & BUMPERS/BUMPERS/FRONT FASCIA - REMOVAL)
- (2) Support front bumper reinforcement on a suitable lifting device.
- (3) Remove the four nuts attaching front bumper reinforcement to frame rail (Fig. 2).
- (4) Remove front bumper reinforcement from vehicle.

### INSTALLATION

**NOTE:** Check position of the arrows molded into the foam for correct orientation.

- (1) Support front bumper reinforcement using a suitable lifting device and lift into position.
- (2) Install the four nuts attaching reinforcement to frame rails. Tighten nuts to 54 N·m (40 ft. lbs.) torque.
- (3) Install front fascia. (Refer to 13 - FRAMES & BUMPERS/BUMPERS/FRONT FASCIA - INSTALLATION).